


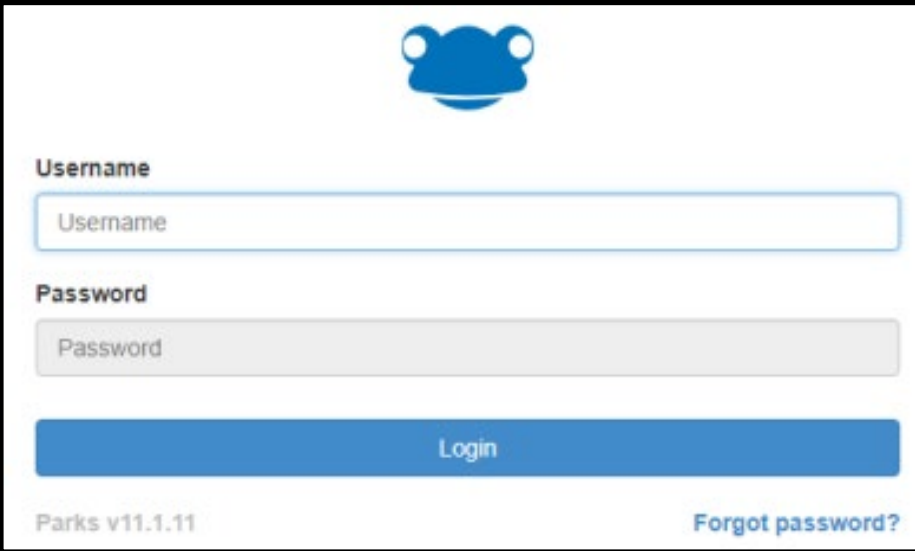


Guide to the Student Portal

1. Logging into Frog

There are several ways to find your way to log into the Harlington Frog VLE

Method 1 Type the Harlington Frog URL directly https://frog.harlingtonschool.co.uk	Method 2 Visit the school website  https://www.harlingtonschool.co.uk/ Click on the Frog VLE link
Method 3 Type "Harlington Frog" into a search engine. Look for https://frog.harlingtonschool.co.uk in the results	



Type in your
username and
password. Click
on Login

Use this to record your
Username and Password
below, (but keep it
somewhere safe and secure!).

USERNAME
<input type="text"/>
PASSWORD
<input type="text"/>

Note: For best results use Google Chrome as your browser



2. Frog Main Page

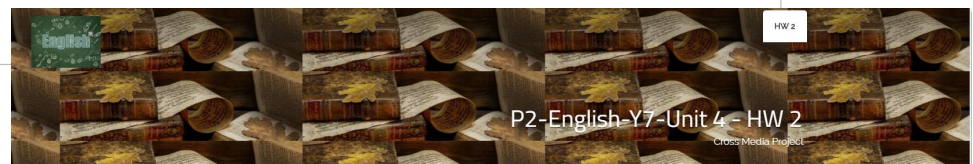
Once logged in you will be taken to the Homepage/ Dashboard



3. Homework

Homework is shown on your homepage in the Assignment Calendar and shows you when the homework is due and what the homework is.

Click on the homework you wish to view and it will take you to the page that has been assigned to you.



Homework

- Write a persuasive speech about the way women are presented in the media.
- This should be completed in their books.
- Students must aim to use at least 4 AFOREST persuasive techniques.
- No more than one A4 side of paper.

WOMEN IN MEDIA

Frog tells you how many days are left till you can complete your homework

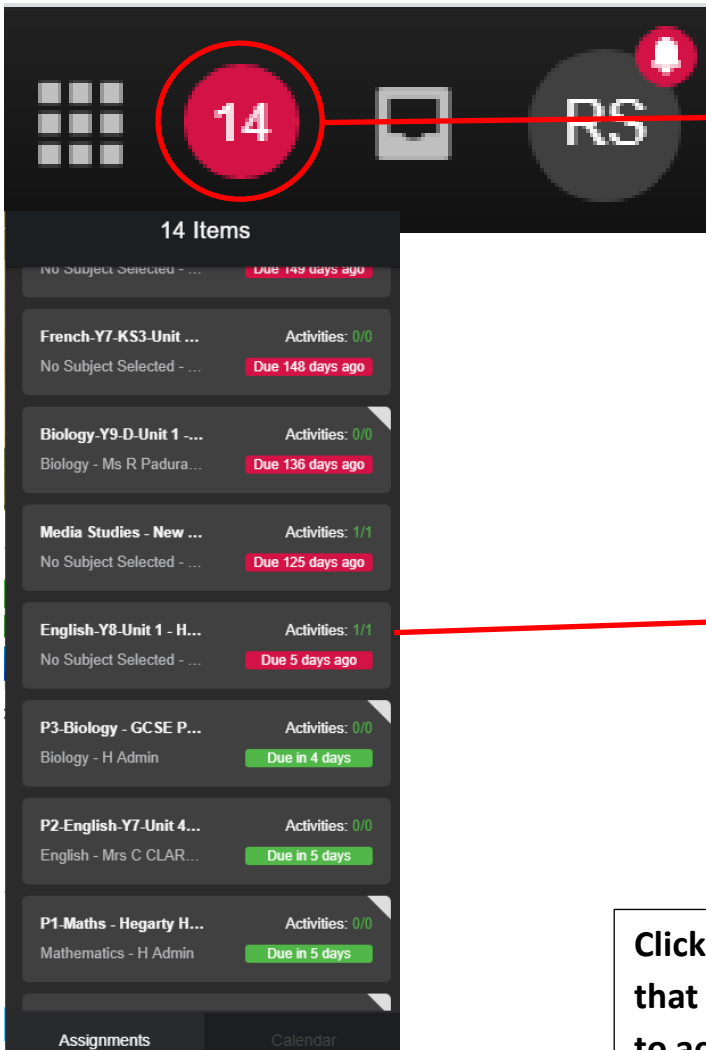
CLARKE

Activities: 0/0

Due in 5 days

Hand In Assignment

Another method on how to view homework assigned to you is by clicking on the number that is in the circle. This shows how many homework's have been assigned to you in the past and many outstanding homework's you need to complete.



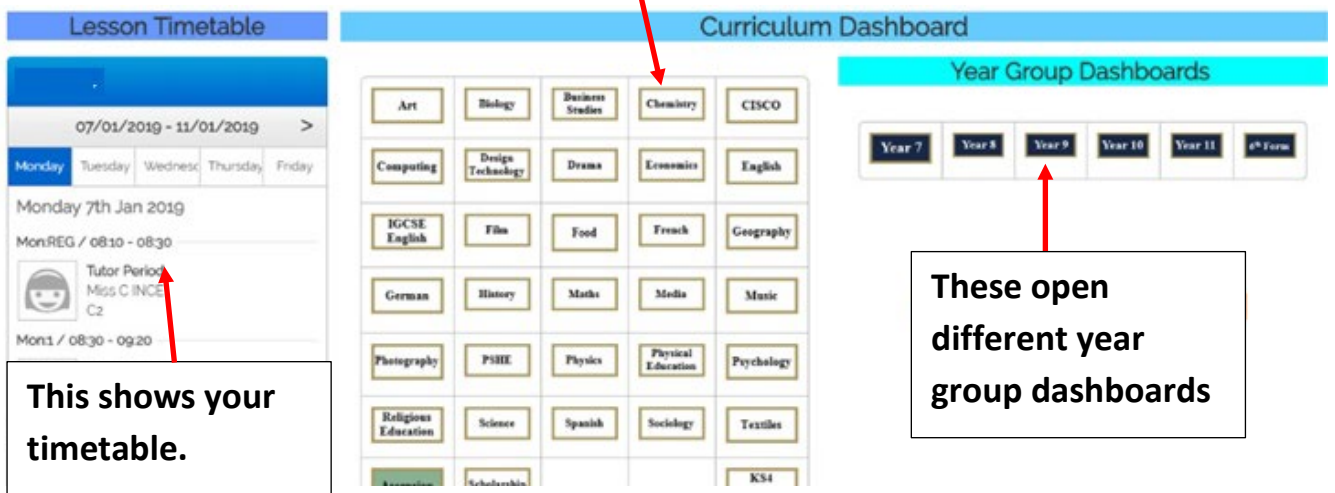
Click on the number.

All homework's are now shown. Also, tells you how many days are left till you can complete and hand in your homework.

Simply click on the assignment you wish to view and it will take you the page.

Click on a curriculum area. This opens that subject's content. This allows you to access resources to allow you to do extra revision.

4. Curriculum Dashboard



This shows your timetable.

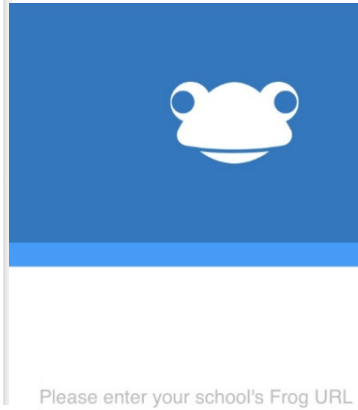
These open different year group dashboards

5. How to download and use the FROG App

To download the Frog App type in the App Store or Google Play Store
“My Frog App”

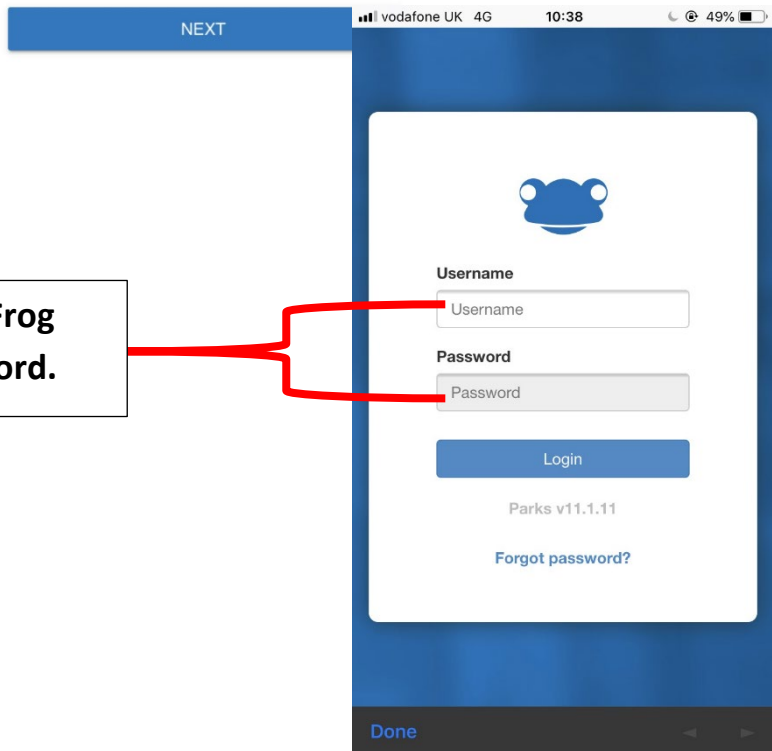


To log into your Frog account via MyFrog App you need to enter Harlington School's Frog URL



Enter the URL:
frog.harlingtonschool.co.uk

The enter your Frog
username and password



You now enter your Frog
username and password.